

The Oaks of Country Club, A Condominium Phase One

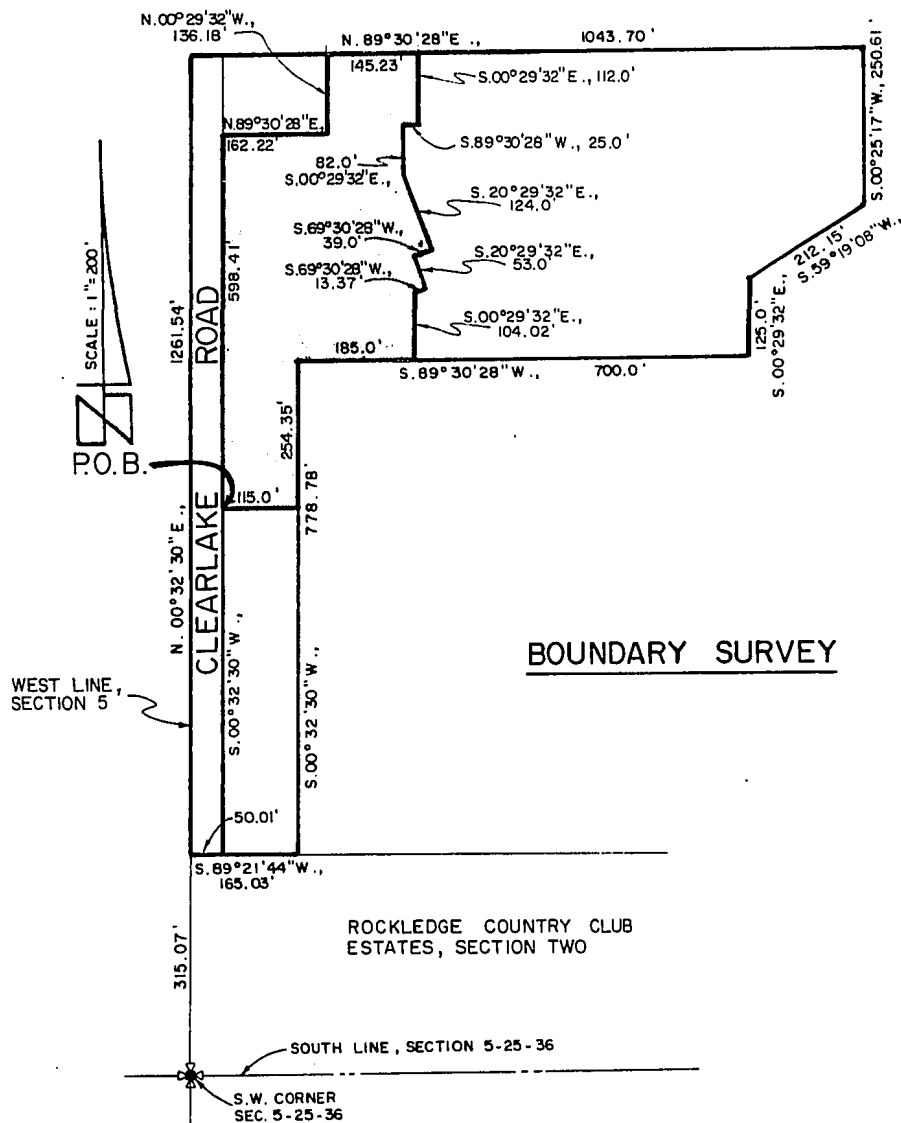


EXHIBIT "A"
SHEET 2 OF 18

FREDLUND and PACKARD
LAND SURVEYORS, INC.

635 BREVARD AVENUE
COCOA, FLORIDA

P O BOX 778 (305) 632-6335

PREPARED FOR THE EXCLUSIVE USE OF THE CLIENT LISTED
BELOW NOT VALID UNLESS EMBOSSED WITH SEAL

BREVARD COUNTRY CLUB
DEVELOPMENT CORP.

{PAGE}

2711

0821

The Oaks of Country Club, A Condominium Phase One

DESCRIPTION :

A parcel of land lying in Section 5, Township 25 South, Range 36 East, Brevard County, Florida, being more particularly described as follows:

Commence at the Southwest corner of said Section 5, and run N.00°32'30"E., along the West line of said Section, a distance of 315.07 feet; thence N.89°21'44"E., a distance of 50.01 feet; thence N.00°32'30"E., parallel to said West line a distance of 526.80 feet to the POINT OF BEGINNING; thence continue N.00°32'30"E., parallel to said West line, a distance of 558.41 feet; thence N.89°30'28"E., a distance of 162.22 feet; thence N.00°29'32"W., a distance of 136.18 feet; thence N.89°30'28"E., a distance of 145.23 feet; thence S.00°29'32"E., a distance of 112.00 feet; thence S.89°30'28"W., a distance of 25.0 feet; thence S.00°29'32"E., a distance of 82.0 feet; thence S.20°29'32"E. a distance of 124.00 feet; thence S.69°30'28"W., a distance of 39.00 feet; thence S.20°29'32"E., a distance of 53.0 feet; thence S.69°30'28"W., a distance of 13.37 feet; thence S.00°29'32"E., a distance of 104.42 feet; thence S.89°30'28"W., a distance of 185.00 feet; thence S.00°32'30"W., a distance of 254.35 feet; thence N.89°27'30"W., a distance of 115.00 feet to the POINT OF BEGINNING, containing 3.487 acres. Subject to all easements and rights of way of record.

NOTES:

- 1.) The bearing structure is based on ROCKLEDGE COUNTRY CLUB ESTATES, SECTION TWO, as recorded in Plat Book 25, Page 101 of the public records of Brevard County, Florida.

**UNSUITABLE
FOR MICROFILM**

EXHIBIT "A"

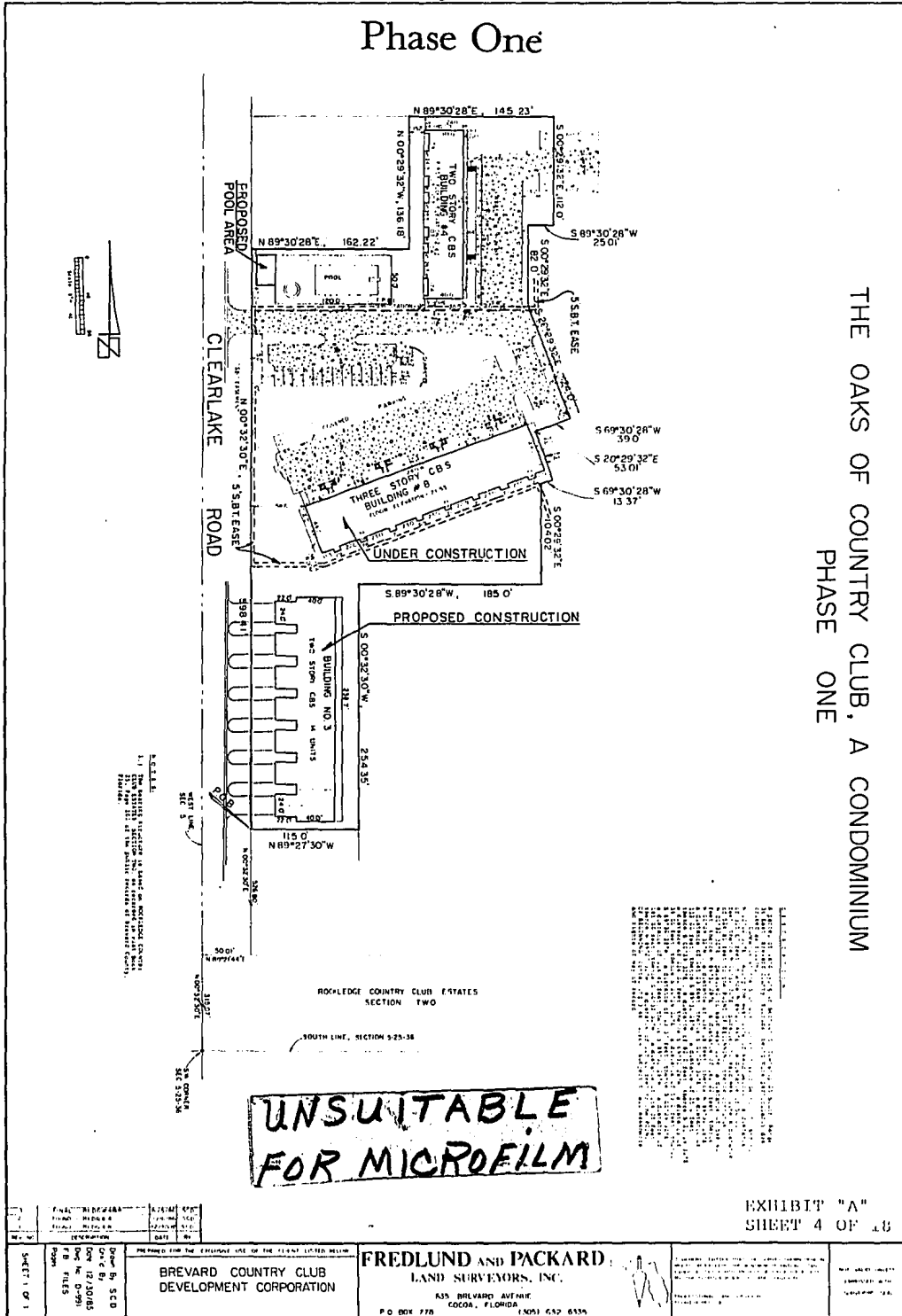
SHEET 3 OF 18

FREDLUND and PACK ^{OFF: REC}
LAND SURVEYORS, 2711 42

(PAGE)

0822

The Oaks of Country Club, A Condominium Phase One

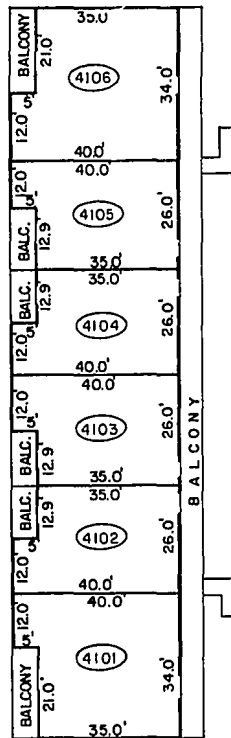


OFF. REC'D
2711⁴³

PAGE:
0823

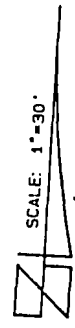
The Oaks of Country Club, A Condominium Phase One

BUILDING "4" FIRST FLOOR



NOTES:

- 1.) The first floor finished floor elevation = 21.50.
- 2.) The first floor ceiling elevation = 29.50.
- 3.) (4104) - indicates building and unit number.
- 4.) — - indicates the limits of the unit.
- 5.) All areas and improvements, exclusive of the units are common elements of the condominium.
- 6.) The elevations are based on National Geodetic Vertical Datum.



OFF. REC.

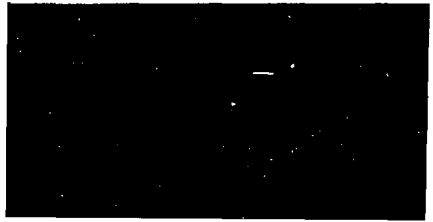
PAGE

EXHIBIT "A"
SHEET 5 OF 18

271
FREDLUND and PACKARD Inc.
engineers - land surveyors

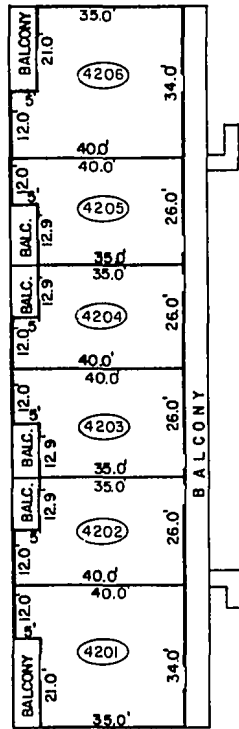
0824

44



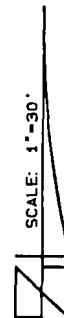
The Oaks of Country Club, A Condominium Phase One

BUILDING "4" SECOND FLOOR



NOTES:

- 1.) The second floor finished floor elevation = 31.50.
- 2.) The second floor ceiling elevation = 39.50.
- 3.) (4203) - indicates the limits of unit.
- 4.) All areas and improvements exclusive of the units are common elements of the condominium.
- 5.) - - indicates the limits of the unit.
- 6.) The elevations are based on National Geodetic Vertical Datum.



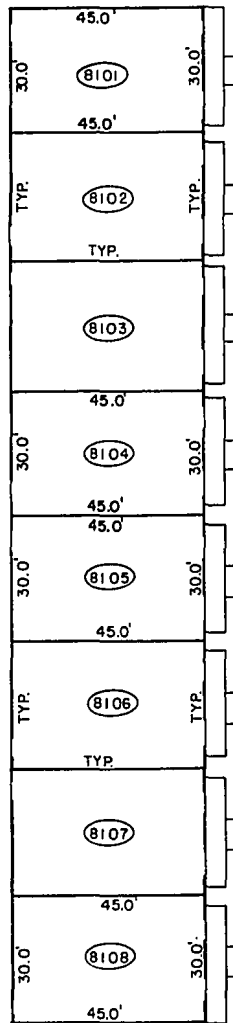
DEF. REC.:

EXHIBIT "A"
SHEET PAGE 1 OF 18

FREDLUND and PACKARD Inc.
engineers - land surveyors

0825

The Oaks of Country Club, A Condominium Phase One



BUILDING "8" FIRST FLOOR

NOTES:

- 1.) The first floor finished floor elevation = 21.50.
- 2.) The first floor ceiling elevation = 29.50.
- 3.) 8104 - indicates building and unit number.
- 4.) — — indicates the limits of the unit.
- 5.) All areas and improvements, exclusive of the units are common elements of the condominium.
- 6.) The elevations are based on National Geodetic Vertical Datum.

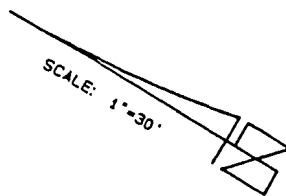


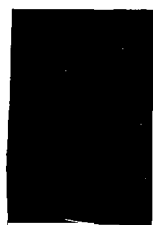
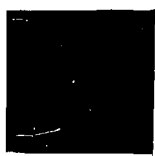
EXHIBIT "A"
SHEET 7 OF 18

OFF. REC.

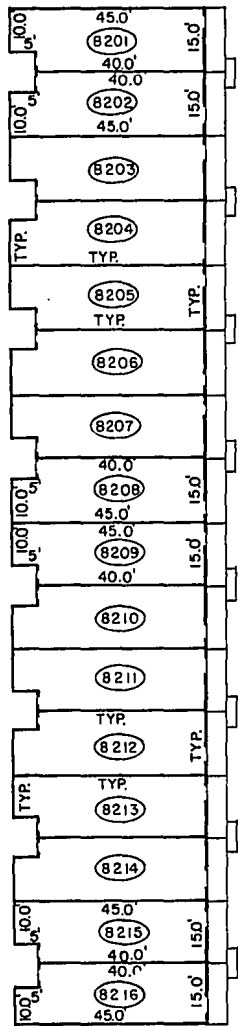
FREIDLUND and PACKARD Inc 2711
engineers - land surveyors

46

0826



The Oaks of Country Club, A Condominium Phase One



BUILDING "8" SECOND FLOOR

NOTES:

- 1.) The second floor finished floor elevation = 31.50.
- 2.) The second floor ceiling elevation = 39.50.
- 3.) 8213 - indicates building and unit number.
- 4.) - - indicates limits of the unit.
- 5.) All areas and improvements exclusive of the units are common elements of the condominium.
- 6.) The elevations are based on National Geodetic Vertical Datum.

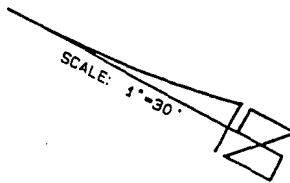


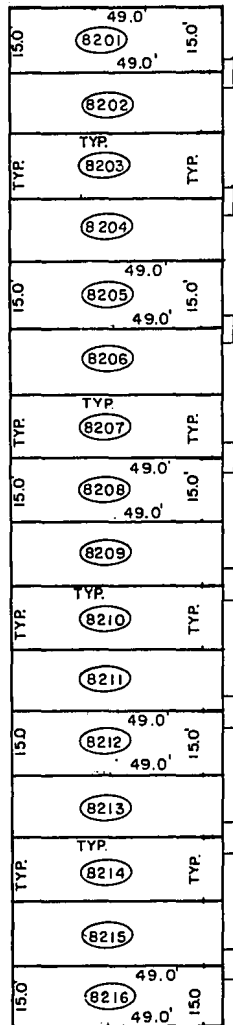
EXHIBIT "A"

OFF. REC.:

SHEET 8 OF 18

FREDLUND and PACKARD Inc.
engineers - land surveyors

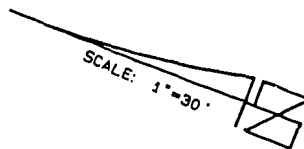
The Oaks of Country Club, A Condominium Phase One



BUILDING "8" THIRD FLOOR

NOTES:

- 1.) The third floor finished floor elevation = 41.50.
- 2.) The third floor ceiling elevation = 49.50.
- 3.) **8206** - indicates building and unit number.
- 4.) - - indicates the limits of the unit.
- 5.) All areas and improvements, exclusive of the units are common elements of the condominium.
- 6.) The elevations are based on National Geodetic Vertical Datum.



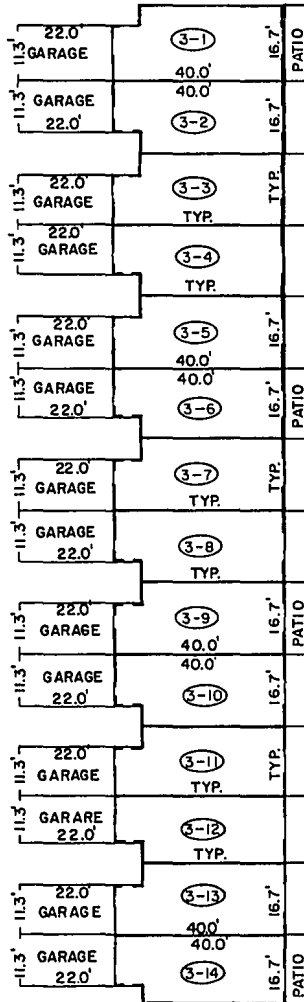
OFF. REC.

EXHIBIT "A"
SHEET 9 OF 18

FREIDLUND and PACKARD Inc.
engineers - land surveyors

0828

The Oaks of Country Club, A Condominium Phase One



BUILDING "3" FIRST FLOOR

NOTES:

- 1.) The first floor finished floor elevation = 21.50.
- 2.) The first floor ceiling elevation = 29.50.
- 3.) (3-1) - indicates building and unit number.
- 4.) - - indicates the limits of the unit.
- 5.) All areas and improvements, exclusive of the units are common elements of the condominium.
- 6.) The elevations are based on National Geodetic Vertical Datum.
- 7.) Proposed Construction.



OFF: REC.

EXHIBIT "A"
PAGE SHEET 10 OF 18

FREIDLUND and PACKARD Inc.
engineers - land surveyors

0829

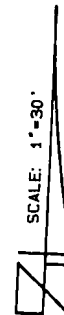
The Oaks of Country Club, A Condominium Phase One

BUILDING "3" SECOND FLOOR

17.33'	40.0'	(3-1)	17.33'	BALC.
	40.0'	(3-2)		
TYP.	(3-3)	TYP.	TYP.	
	(3-4)			
17.33'	40.0'	(3-5)	17.33'	BALC.
	40.0'	(3-6)		
TYP.	(3-7)	TYP.	TYP.	
	(3-8)			
17.33'	40.0'	(3-9)	17.33'	BALC.
	40.0'	(3-10)		
TYP.	(3-11)	TYP.	TYP.	BALC.
	(3-12)			
TYP.	TYP.	(3-13)	TYP.	
17.33'	40.0'	(3-14)	17.33'	BALCONY
	40.0'			

NOTES:

- 1.) The second floor finished floor elevation = 31.50.
- 2.) The second floor ceiling elevation = 39.50.
- 3.) (3-1) - indicates building and unit number.
- 4.) - - indicates the limits of the unit.
- 5.) All areas and improvements, exclusive of the units are common elements of the condominium.
- 6.) The elevations are based on National Geodetic Vertical Datum.
- 7.) Proposed Construction.



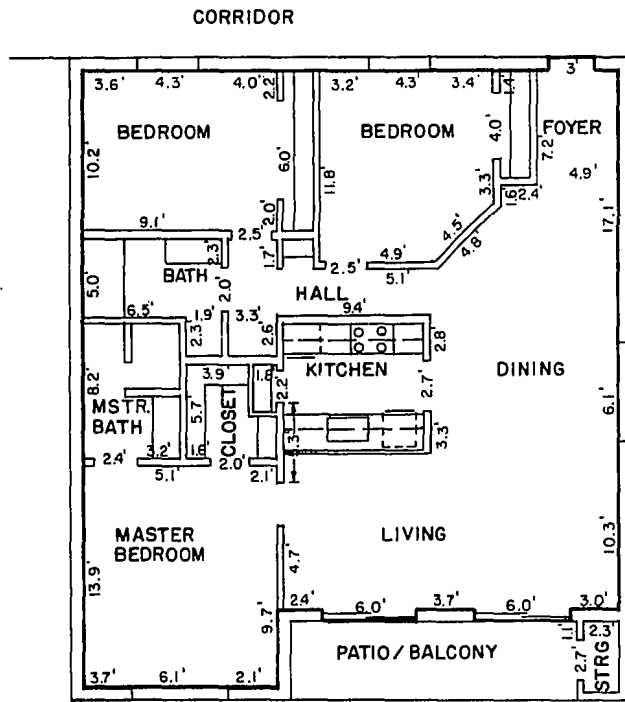
OFF. REC.

EXHIBIT "A"
SHEET 11 OF 18
PAGE

FREDLUND and PACKARD Inc.
engineers - land surveyors

0830

The Oaks of Country Club, A Condominium Phase One



NOTES:

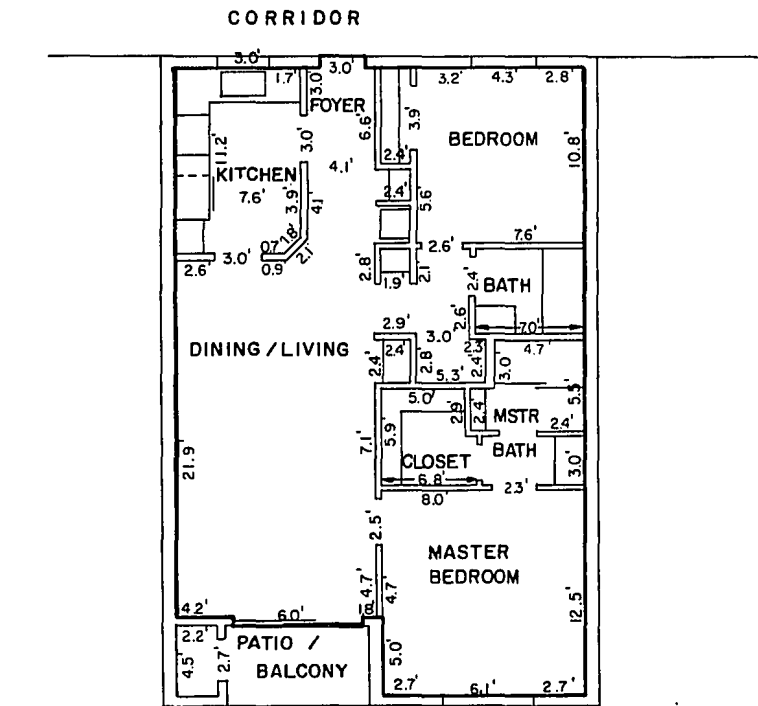
- 1.) This unit is typical of Model "A" of the units within Building #4.
- 2.) — — indicates the limits of the unit.
- 3.) Some of the units may be reversed or a mirror image of the unit shown.
- 4.) All areas not included in the unit are common elements of the condominium.

OFF. REC. 2711

EXHIBIT "A" PAGE:
SHEET 12 OF 18

FREDLUND and PACKARD Inc.
engineers - land surveyors

The Oaks of Country Club, A Condominium Phase One



NOTES:

- 1.) This unit is typical of Model "B" of those units within Building #4.
- 2.) - - indicated limits of the unit.
- 3.) Some of the units may be reversed or the mirror image of the unit shown.
- 4.) All areas not included in the unit are common elements of the condominium.

EXHIBIT "A"

OFF: REC'

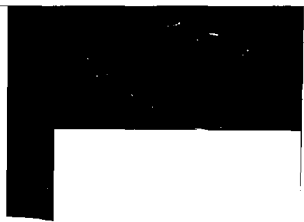
SHEET 163 OF 18

FREDLUND and PACKARD INC. |

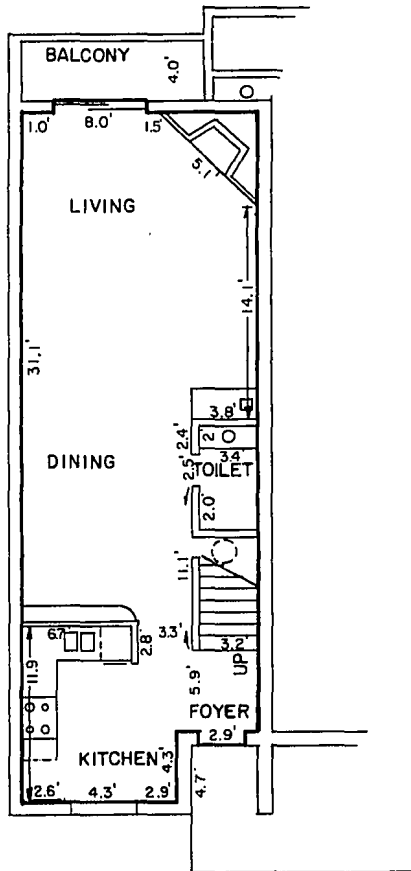
engineers - land surveyors

52

0832



The Oaks of Country Club, A Condominium Phase One



NOTES:

- 1.) This unit is typical of Model "G", first floor of units within Building #8.
- 2.) - - indicates the limits of the unit
- 3.) Some of the units may be reversed or a mirror image of the unit shown.
- 4.) All areas not included in the unit are common elements of the condominium.

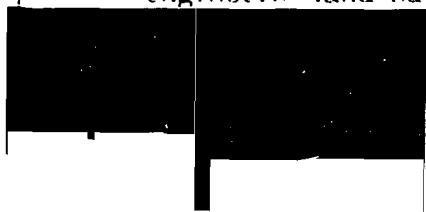
OFFREC:

EXHIBIT "A"
SHEET 15 OF 18

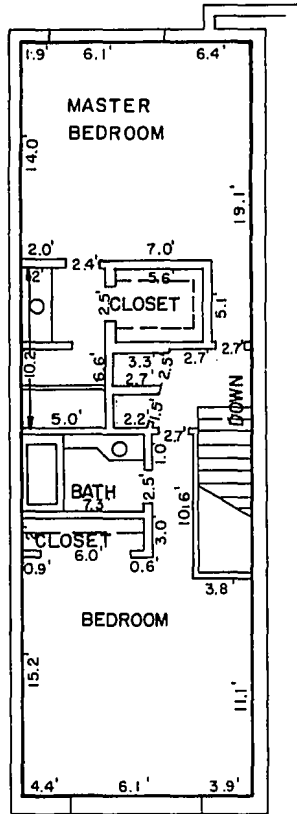
FREDLUND and PACKARD Inc.
engineers - land surveyors

54

0834



The Oaks of Country Club, A Condominium Phase One



NOTES:

- 1.) This unit is typical of Model "G", second floor of units within Building #8.
- 2.) - - indicates the limits of the unit.
- 3.) Some of the units may be reversed or a mirror image of the unit shown.
- 4.) All areas not included in the unit are common elements of the condominium.

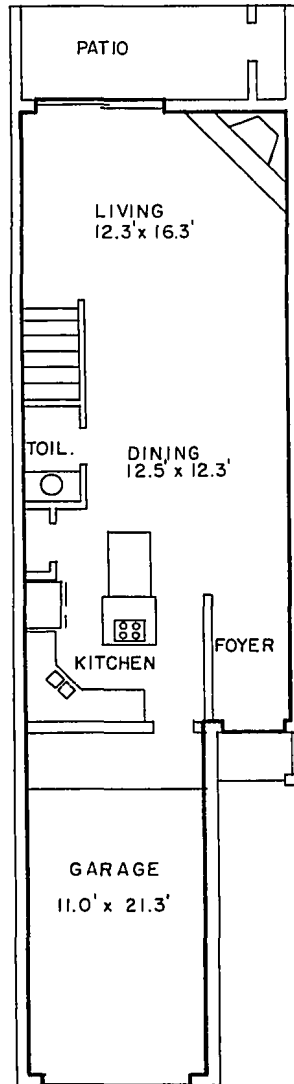
OFF. REC'D

2711

EXHIBIT "A" (PAGE)
SHEET 16 OF 8835

FREDLUND and PACKARD Inc.
engineers - land surveyors

The Oaks of Country Club, A Condominium Phase One



NOTES:

- 1.) This unit is typical of the first floor units of Building #3.
- 2.) --- indicates the limits of the unit.
- 3.) Some of the units may be reversed or a mirror image of the unit shown.
- 4.) All areas not included in the unit are common elements of the condominium.
- 5.) Proposed Construction.

EXHIBIT "A"
SHEET 17 OF 18

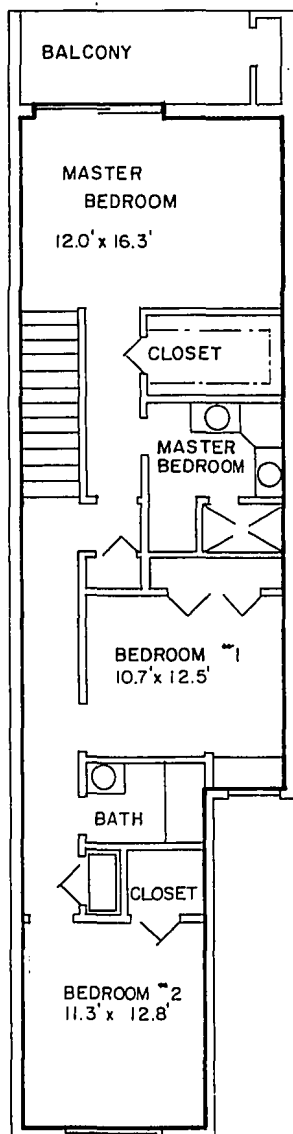
OFF. REC:

TRAGEI

FREDLUND and PACKARD Inc. 2711
engineers - land surveyors

0836

The Oaks of Country Club, A Condominium Phase One



NOTES :

- 1.) This is typical of the second floor units of Building #3.
- 2.) --- indicates the limits of the unit.
- 3.) Some of the units may be reversed of a mirror image of the unit shown.
- 4.) All areas not included in the unit are common elements of the condominium.
- 5.) Proposed Construction.

EXHIBIT "A"
SHEET 18 OF 18
PAGE:

OFF. REC.

FREIDLUND and PACKARD Inc. 2711
engineers - land surveyors

0837

57



The Oaks of Country Club, A Condominium

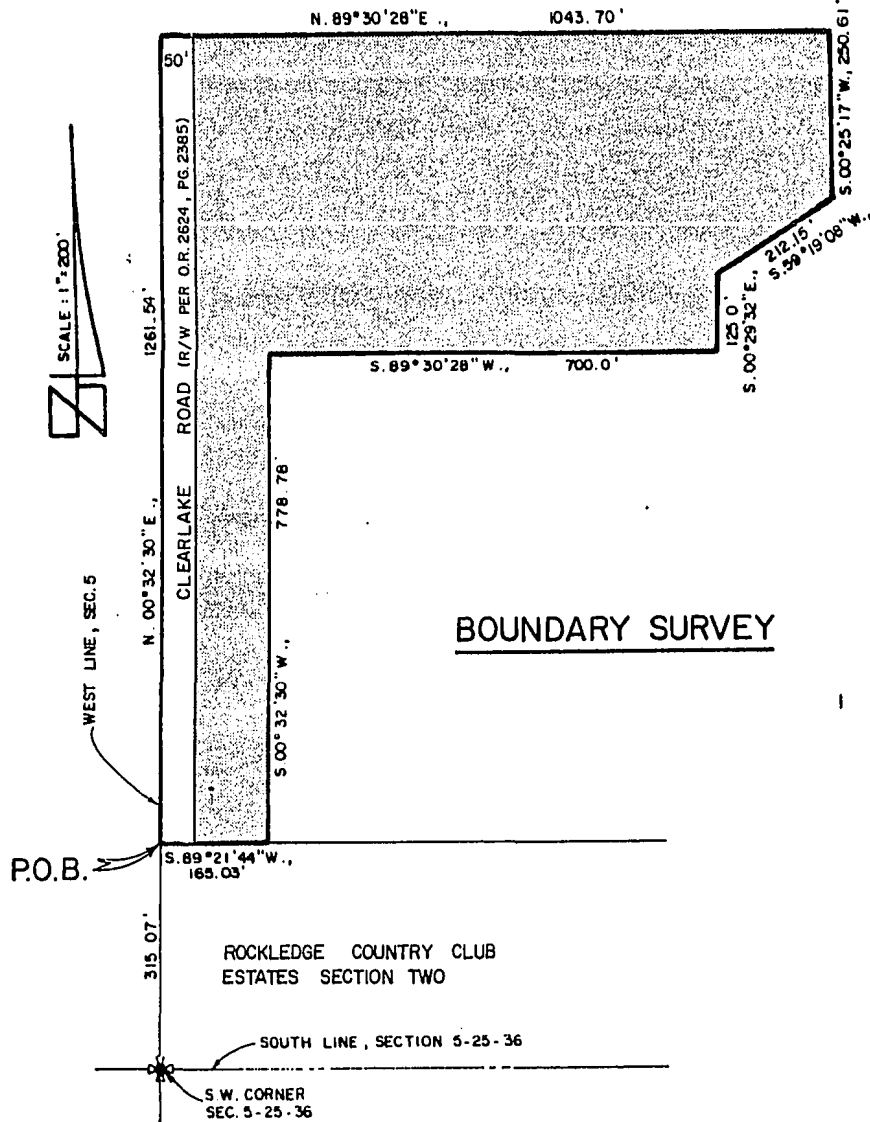


EXHIBIT "B"

SHEET 1 OF 14

FREDLUND and PACKARD Inc.
 engineers - land surveyors
 635 BREVARD AVENUE
 COCOA, FLORIDA
 P.O. BOX 778 (305) 632-6335

PREPARED FOR THE EXCLUSIVE USE OF THE CLIENT LISTED
 BELOW NOT VALID UNLESS EMBOSSED WITH SEAL

**BREVARD COUNTRY CLUB
 DEVELOPMENT CORP.**

OFF. REF. 27.1

PAGE 1

0838

The Oaks of Country Club, A Condominium

DESCRIPTION OF TOTAL PROJECT:

A parcel of land lying in Section 5, Township 25 South, Range 36 East, Brevard County, Florida, being more particularly described as follows:

Commence at the Southwest corner of said Section 5, and run N.00°32'30"E., along the West line of said section, a distance of 315.07 feet to the Northwest corner of ROCKLEDGE COUNTRY CLUB ESTATES, SECTION TWO, as recorded in Plat Book 25, Page 101 of the public records of Brevard County, Florida, the Point of Beginning; thence continue N.00°32'30"E., along said West line, a distance of 1261.54 feet; thence N.89°30'28"E., a distance of 1043.70 feet; thence S.00°25'17"W., a distance of 250.61 feet; thence S.59°19'08"W., a distance of 212.15 feet; thence S.00°29'32"E., a distance of 125.00 feet; thence S.89°30'28"W., a distance of 700.00 feet; thence S.00°32'30"W., parallel with the said West line of Section 5, a distance of 778.78 feet to a point on the North line of said ROCKLEDGE COUNTRY CLUB ESTATES, SECTION TWO; thence S.89°21'44"W., along said North line, a distance of 165.03 feet to the Point of Beginning; containing 13.77 acres.

Less and except the West 50.0 feet of the above described parcel for road right of way for Clearlake Road per O.R. 2624, Page 2385.

Containing 12.32 acres.

Subject to all other easements and rights of way of record.

EXHIBIT "B"

SHEET 2 OF 14

OFF. REC.

PAGE

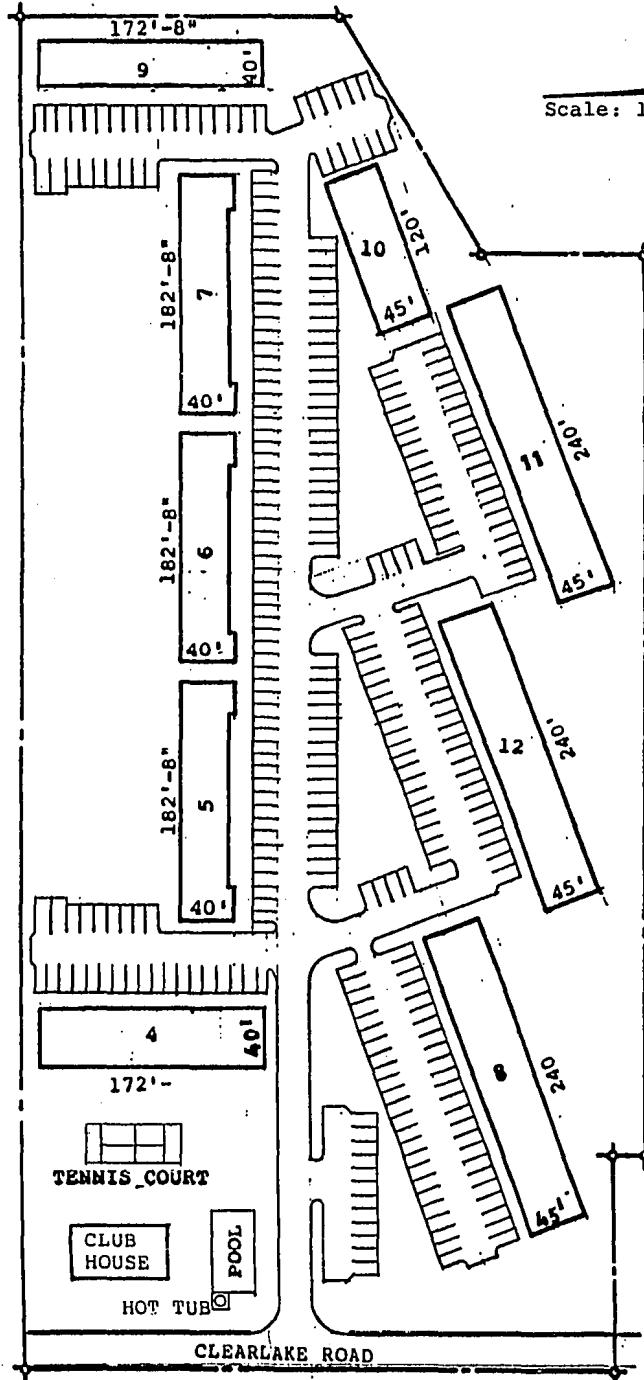
2711

59

0839

The Oaks of Country Club, A Condominium

GRAPHIC PLOT PLAN - NORTH AREA



Scale: 1"=100'

OFF. REC:
2711

PAGE:
0840

EXHIBIT "B"
SHEET 3 OF 14



The Oaks of Country Club, A Condominium

GRAPHIC PLOT PLAN - SOUTH AREA

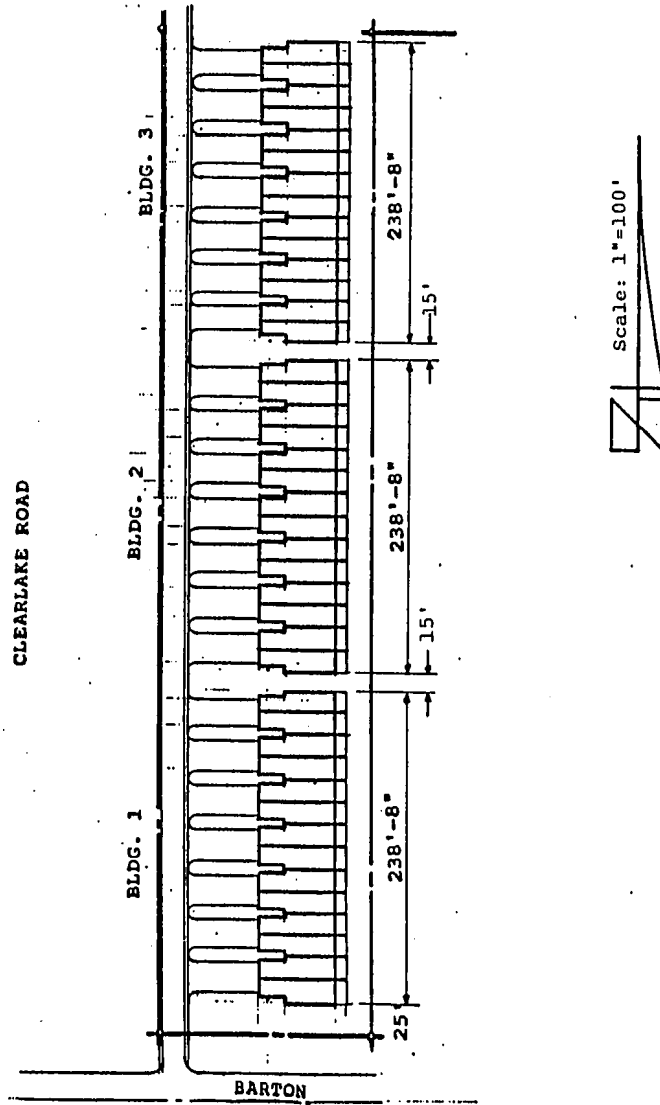


EXHIBIT "B"
SHEET 4 OF 14

OFF REC'D

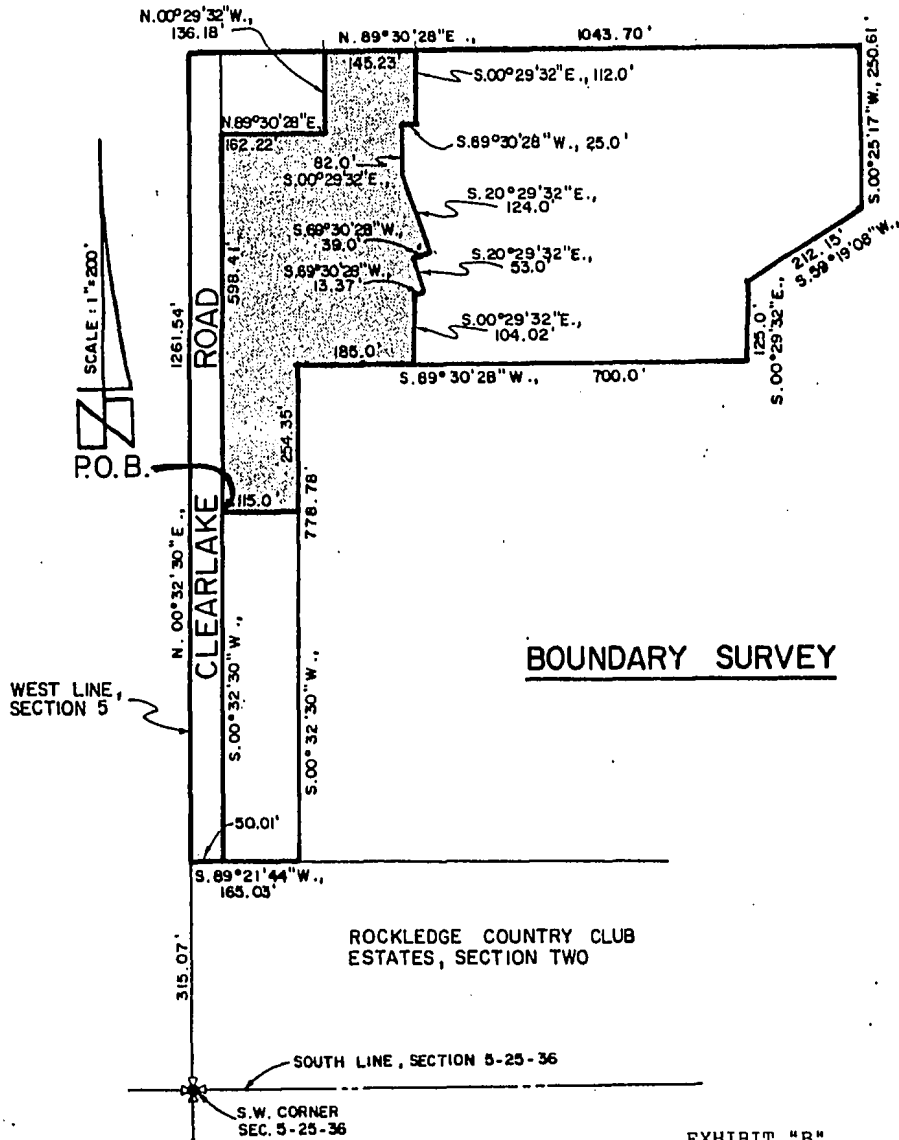
2711

61

PAGE

0841

The Oaks of Country Club, A Condominium Phase One



SCALE: 1"=200'
P.O.B.

EXHIBIT "B"

Sheet 5 of 14

FREDLUND and PACKARD
LAND SURVEYORS, INC.
 635 BREVARD AVENUE
 COCOA, FLORIDA OFF. REC.
 P O BOX 778 (305) 632-6335

PREPARED FOR THE EXCLUSIVE USE OF THE CLIENT LISTED
 BELOW NOT VALID UNLESS EMBOSSED WITH SEAL.

**BREVARD COUNTRY CLUB
 DEVELOPMENT CORP.**

PAGE 1

2711

0842

The Oaks of Country Club, A Condominium Phase One

DESCRIPTION :

A parcel of land lying in Section 5, Township 25 South, Range 36 East, Brevard County, Florida, being more particularly described as follows:

Commence at the Southwest corner of said Section 5, and run N.00°32'30"E., along the West line of said Section, a distance of 315.07 feet; thence N.89°21'44"E., a distance of 50.01 feet; thence N.00°32'30"E., parallel to said West line a distance of 526.80 feet to the POINT OF BEGINNING; thence continue N.00°32'30"E., parallel to said West line, a distance of 598.41 feet; thence N.89°30'28"E., a distance of 162.22 feet; thence N.00°29'32"W., a distance of 136.18 feet; thence N.89°30'28"E., a distance of 145.23 feet; thence S.00°29'32"E., a distance of 112.00 feet; thence S.89°30'28"W., a distance of 25.0 feet; thence S.00°29'32"E., a distance of 82.0 feet; thence S.20°29'32"E a distance of 124.00 feet; thence S.69°30'28"W., a distance of 39.00 feet; thence S.20°29'32"E., a distance of 53.0 feet; thence S.69°30'28"W., a distance of 13.37 feet; thence S.00°29'32"E., a distance of 104.42 feet; thence S.89°30'28"W., a distance of 185.00 feet; thence S.00°32'30"W., a distance of 254.35 feet; thence N.89°27'30"W., a distance of 115.00 feet to the POINT OF BEGINNING, containing 3.487 acres. Subject to all easements and rights of way of record.

NOTES:

- 1.) The bearing structure is based on ROCKLEDGE COUNTRY CLUB ESTATES, SECTION TWO, as recorded in Plat Book 25, Page 101 of the public records of Brevard County, Florida.

EXHIBIT "B"

. Sheet 6 of 14

FREDLUND and ^{OFFICE}PACK RD
LAND SURVEYORS, (1)

63

(PAGE)

0843

The Oaks of Country Club, A Condominium Phase Two

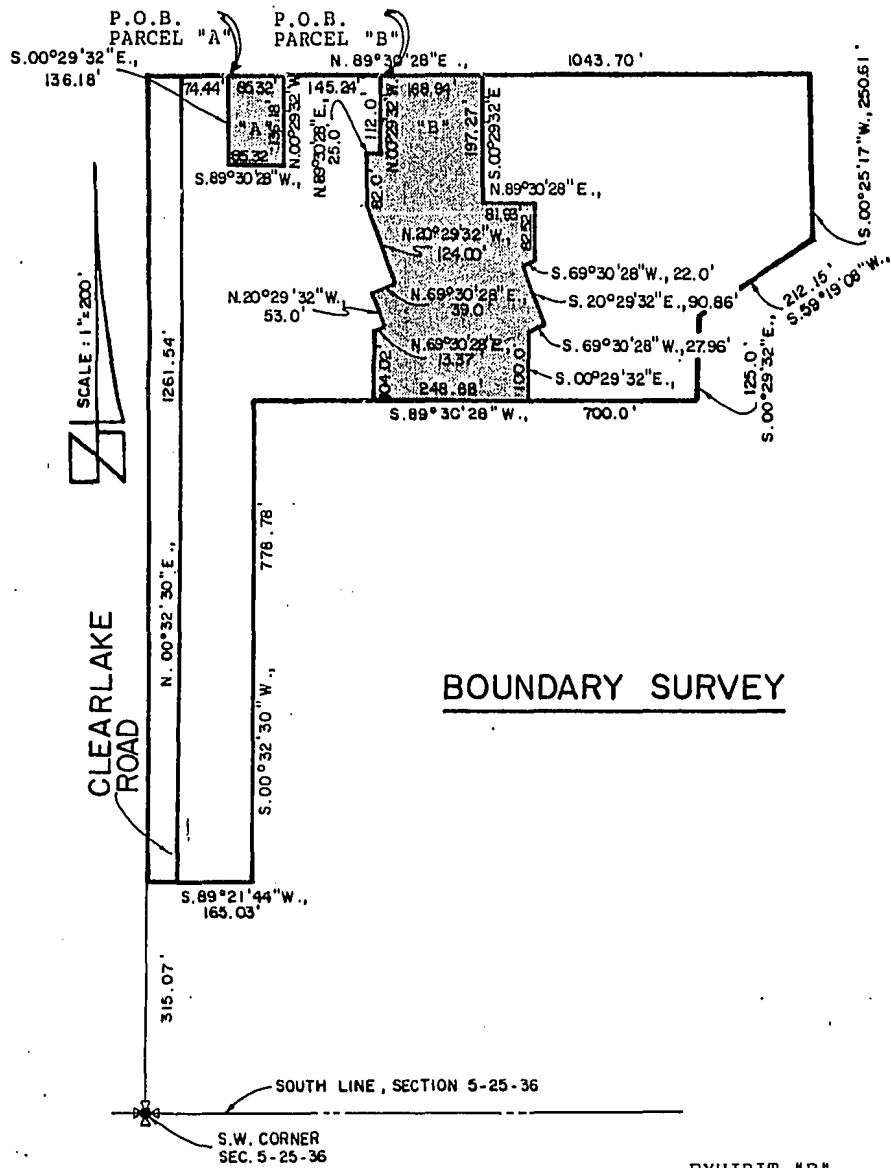


EXHIBIT "B"

Sheet 7 of 14

FREDLUND and PACKARD
LAND SURVEYORS, INC.
 635 BREVARD AVENUE
 COCOA, FLORIDA
 P O BOX 778 (305) 0632-6335

PREPARED FOR THE EXCLUSIVE USE OF THE CLIENT LISTED
 BELOW NOT VALID UNLESS EMBOSSED WITH SEAL

**BREVARD COUNTRY CLUB
 DEVELOPMENT CORP.**

2711

0844

The Oaks of Country Club, A Condominium

Phase Two

DESCRIPTION PARCEL "B" (PHASE TWO):

A parcel of land lying in Section 5, Township 25 South, Range 36 East, Brevard County, Florida, being more particularly described as follows:

Commence at the Southwest corner of said Section 5, and run N.00°32'30"E., along the West line of said Section, a distance of 315.07 feet; thence N.89°21'44"E., a distance of 50.01 feet; thence N.00°32'30"E., parallel to said West line a distance of 1261.54 feet; thence N.89°30'28"E., a distance of 305.00 feet to the Point of Beginning; thence continue N.89°30'28"E., a distance of 168.94 feet; thence S.00°29'32"E., a distance of 197.27 feet; thence N.89°30'28"E., a distance of 81.93 feet; thence S.00°29'32"E., a distance of 82.52 feet; thence S.69°30'28"W., a distance of 22.0 feet; thence S.20°29'32"E., a distance of 90.86 feet; thence S.69°30'28"W., a distance of 27.96 feet; thence S.00°29'32"E., a distance of 100.00 feet; thence S.89°30'28"W., a distance of 248.68 feet; thence N.00°29'32"E., a distance of 104.02 feet; thence N.69°30'28"E., a distance of 13.37 feet; thence N.20°29'32"W., a distance of 53.0 feet; thence N.69°30'28"E., a distance of 39.0 feet; thence N.20°29'32"W., a distance of 124.00 feet; thence N.00°29'32"W., a distance of 82.0 feet; thence N.89°30'28"E., a distance of 25.0 feet; thence N.00°29'32"W., a distance of 112.0 feet; to the Point of Beginning, containing 2.46 acres. Subject to all easements and rights of way of record.

EXHIBIT "B"

Sheet 8 of 14

FREDLUND and PACKARD
LAND SURVEYORS, INC.

635 BREVARD AVENUE
COCOA, FLORIDA

P O BOX 778

(305) 632-6335

PREPARED FOR THE EXCLUSIVE USE OF THE CLIENT LISTED
BELOW NOT VALID UNLESS EMBOSSED WITH SEAL

BREVARD COUNTRY CLUB
DEVELOPMENT CORP.

(PAGE)

2711

65

0845

The Oaks of Country Club, A Condominium Phase Two

DESCRIPTION: PARCEL "A" (TENNIS COURTS):

A parcel of land lying in Section 5, Township 25 South, Range 36 East, Brevard County, Florida, being more particularly described as follows:

Commence at the Southwest corner of said Section 5, and run N.00°32'30"E., along the West line of said Section, a distance of 315.07 feet; thence N.89°21'44"E., a distance of 50.01 feet; thence N.00°32'30"E., parallel to said West line a distance of 1261.54 feet; thence N.89°30'28"E., a distance of 74.44 feet to the Point of Beginning; thence continue N.89°30'28"E., a distance of 85.32 feet; thence run S.00°29'32"E., a distance of 136.18 feet; thence S.89°30'28"W., a distance of 85.32 feet; thence N.00°29'32"W., a distance of 136.18 feet; to the Point of Beginning; containing 0.266 acres. Subject to all easements and rights of way of record.

EXHIBIT "B"

Sheet 9 of 14

FREDLUND and PACKARD
LAND SURVEYORS, INC.

635 BREVARD AVENUE
COCOA, FLORIDA

P O BOX 778

(305) 632-6335

PREPARED FOR THE EXCLUSIVE USE OF THE CLIENT LISTED
BELOW NOT VALID UNLESS EMBOSSED WITH SEAL

**BREVARD COUNTRY CLUB
DEVELOPMENT CORP.**

OFF. REC.

2711

PAGE

66

0846

The Oaks of Country Club, A Condominium Phase Three

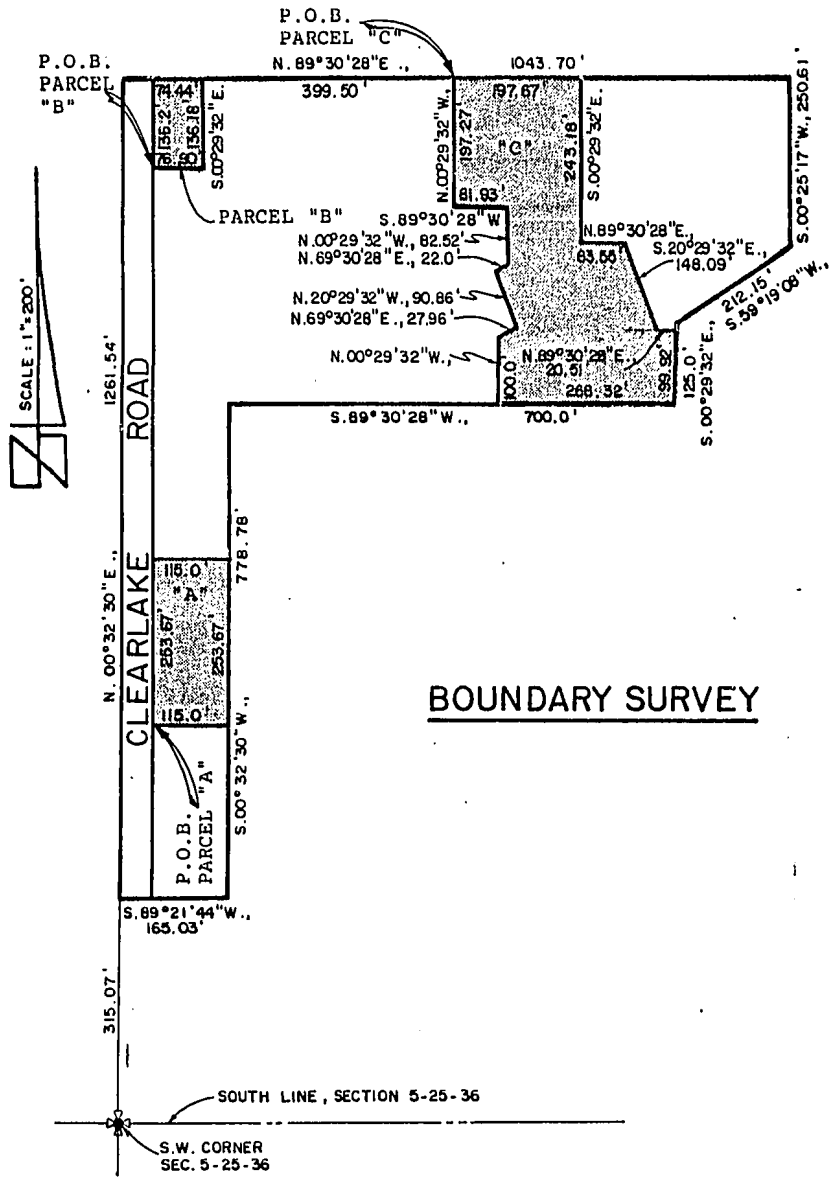


EXHIBIT "B"
Sheet 10 of 14

FREDLUND and PACKARD
LAND SURVEYORS, INC.
 635 BREVARD AVENUE
 COCOA, FLORIDA
 P O BOX 778 (305) 632-6335

PREPARED FOR THE EXCLUSIVE USE OF THE CLIENT LISTED
 BELOW NOT VALID UNLESS EMBOSSED WITH SEAL
BREVARD COUNTRY CLUB
DEVELOPMENT CORP.

2711

67

0847

The Oaks of Country Club, A Condominium Phase Three

DESCRIPTION PARCEL "C" (PHASE THREE)

A parcel of land lying in Section 5, Township 25 South; Range 36 East, Brevard County, Florida, being more particularly described as follows:

Commence at the Southwest corner of said Section 5, and run N.00°32'30"E., along the West line of said Section, a distance of 315.07 feet; thence N.89°21'44"E., a distance of 50.01 feet; thence N.00°32'30"E., parallel to said West line a distance of 1261.54 feet; thence N.89°30'28"E., a distance of 473.94 feet to the Point of Beginning; thence continue N.89°30'28"E., a distance of 197.67 feet; thence S.00°29'32"E., a distance of 243.18 feet; thence N.89°30'28"E., a distance of 63.55 feet; thence S.20°29'32"E., a distance of 148.09 feet; thence N.89°30'28"E., a distance of 20.51 feet; thence S.00°29'32"E., a distance of 99.92 feet; thence S.89°30'28"W., a distance of 266.32 feet; thence N.00°29'32"W., a distance of 100.0 feet; thence N.69°30'28"E., a distance of 27.96 feet; thence N.20°29'32"W., a distance of 90.86 feet; thence N.69°30'28"E., a distance of 22.0 feet; thence N.00°29'32"W., a distance of 82.52 feet; thence S.89°30'28"W., a distance of 81.93 feet; thence N.00°29'32"W., a distance of 197.27 feet to the Point of Beginning; containing 2.29 acres. Subject to all easements and rights of way of record.

EXHIBIT "B"

Sheet 11 of 14

FREDLUND and PACKARD
LAND SURVEYORS, INC.

635 BREVARD AVENUE
COCOA, FLORIDA

P O BOX 778

(305) 632-6335

PREPARED FOR THE EXCLUSIVE USE OF THE CLIENT LISTED
BELOW NOT VALID UNLESS EMBOSSED WITH SEAL

**BREVARD COUNTRY CLUB
DEVELOPMENT CORP.**

!PAGE!

2711

0848

The Oaks of Country Club, A Condominium Phase Three

DESCRIPTION PARCEL "A" (BUILDING #2):

A parcel of land lying in Section 5, Township 25 South, Range 36 East, Brevard County, Florida being more particularly described as follows:

Commence at the Southwest corner of said Section 5 and run N.00°32'30"E., along the West line of said Section, a distance of 315.07 feet; thence N.89°21'44"E., a distance of 50.01 feet; thence N.00°32'30"E., parallel to said West line a distance of 270.76 feet to the Point of Beginning; thence continue N.00°32'30"E., parallel to said West line, a distance of 253.67 feet; thence S.89°27'30"E., a distance of 115.00 feet; thence S.00°32'30"W., a distance of 253.67 feet; thence N.89°27'30"W., a distance of 115.0 feet to the Point of Beginning; containing 0.66 acres. Subject to all easements and rights of way of record.

DESCRIPTION PARCEL "B" (RECREATION BUILDING):

A parcel of land lying in Section 5, Township 25 South, Range 36 East, Brevard County, Florida, being more particularly described as follows:

Commence at the Southwest corner of said Section 5, and run N.00°32'30"E., along the West line of said Section, a distance of 315.07 feet; thence N.89°21'44"E., a distance of 50.01 feet; thence N.00°32'30"E., parallel to said West line a distance of 1125.34 to the Point of Beginning; thence continue N.00°32'30"E., parallel to said West line a distance of 136.2 feet; thence N.89°30'28"E., a distance of 74.44 feet; thence S.00°29'32"E., a distance of 136.18 feet; thence S.89°30'28"W., a distance of 76.90 feet to the Point of Beginning; containing 0.236 acres. Subject to all easements and rights of way of record.

EXHIBIT "B"

Sheet 12 of 14

FREDLUND and PACKARD
LAND SURVEYORS, INC.

635 BREVARD AVENUE
COCOA, FLORIDA

P O BOX 778

(305) 632-6339

PREPARED FOR THE EXCLUSIVE USE OF THE CLIENT LISTED
BELOW NOT VALID UNLESS EMBOSSED WITH SEAL

BREVARD COUNTRY CLUB
DEVELOPMENT CORP.

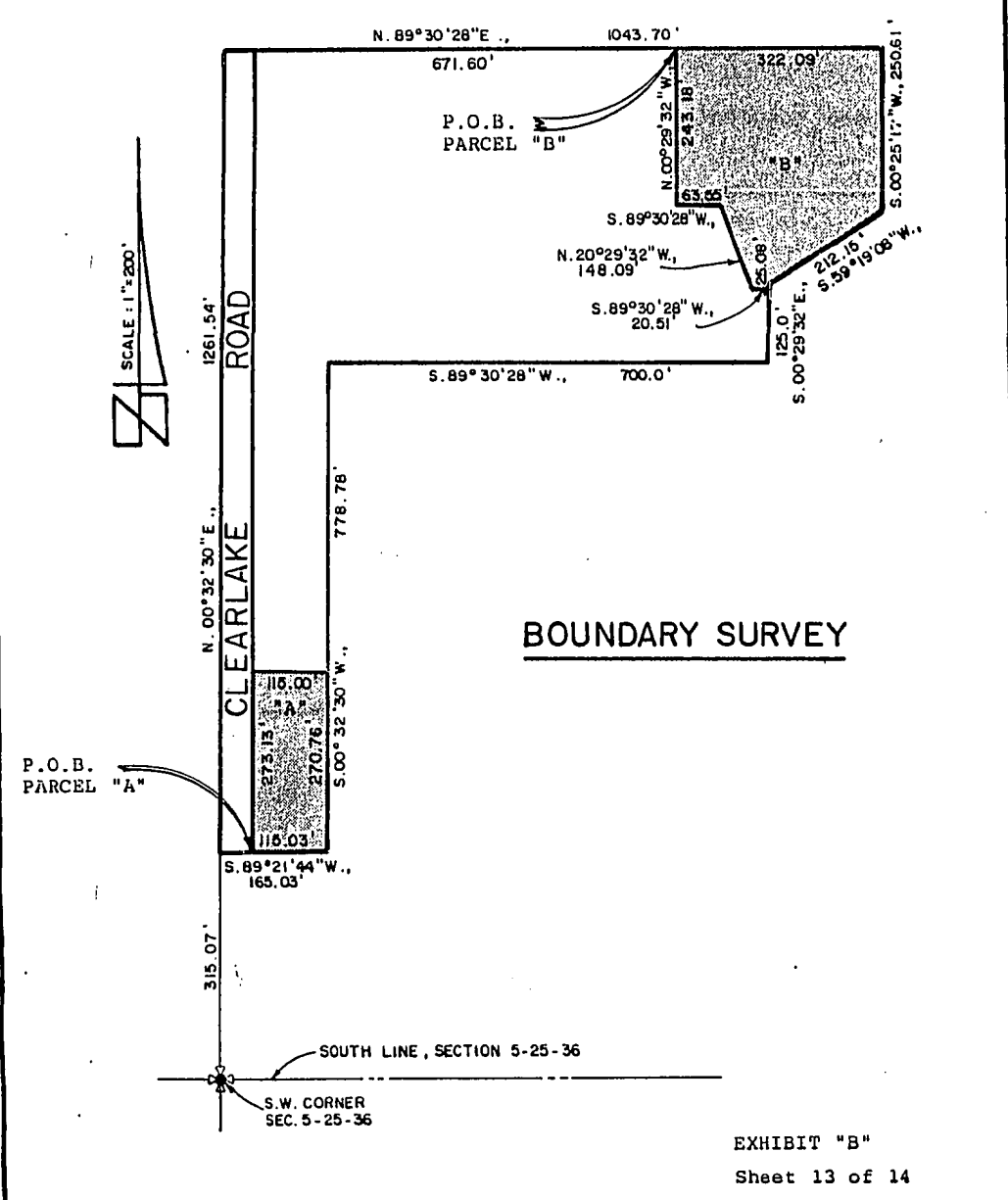
IPAGEI

2711

69

0849

The Oaks of Country Club, A Condominium Phase Four



<p>FREDLUND and PACKARD LAND SURVEYORS, INC. 635 BREVARD AVENUE COCOA, FLORIDA P O BOX 778 1308 E. 632 - 6335</p>	<p>PREPARED FOR THE EXCLUSIVE USE OF THE CLIENT LISTED BELOW NOT VALID UNLESS EMBOSSED WITH SEAL</p> <p>BREVARD COUNTRY CLUB DEVELOPMENT CORP.</p>
--	--

2711

0850

The Oaks of Country Club, A Condominium Phase Four

DESCRIPTION PARCEL "A" (BUILDING #1):

A parcel of land lying in Section 5, Township 25 South, Range 36 East, Brevard County, Florida, being more particularly described as follows:

Commence at the Southwest corner of said Section 5, and run N.00°32'30"E., along the West line of said Section, a distance of 315.07 feet; thence N.89°21'44"E., a distance of 50.01 feet to the Point of Beginning; thence continue N.89°21'44"W., a distance of 115.03 feet; thence N.00°32'30"E., parallel to said West line a distance of 270.76 feet; thence N.89°27'30"W., a distance of 115.00 feet; thence S.00°32'30"W., a distance of 273.13 feet to the Point of Beginning; containing 0.71 acres. Subject to all easements and rights of way of record.

DESCRIPTION PARCEL "B" (PHASE FOUR)

A parcel of land lying in Section 5, Township 25 South, Range 36 East, Brevard County, Florida, being more particularly described as follows:

Commence at the Southwest corner of said Section 5, and run N.00°32'30"E., along the West line of said Section, a distance of 315.07 feet; thence N.89°21'44"E., a distance of 50.01 feet; thence N.00°32'30"E., parallel to said West line a distance of 1261.54 feet; thence N.89°30'28"E., a distance of 671.60 feet to the Point of Beginning; thence continue N.89°30'28"E., a distance of 322.09 feet; thence S.00°25'17"W., a distance of 250.61 feet; thence S.59°19'08"W., a distance of 212.15 feet; thence S.00°29'32"E., a distance of 25.08 feet; thence S.89°30'28"W., a distance of 20.51 feet; thence N.20°29'32"W., a distance of 148.09 feet; thence S.89°30'28"W., a distance of 63.55 feet; thence N.00°29'32"W., a distance of 243.18 feet to the Point of Beginning; containing 2.18 acres. Subject to all easements and rights of way of record.

EXHIBIT "B"
SHEET 14 OF 14

FREDLUND and PACKARD
LAND SURVEYORS, INC.
635 BREVARD AVENUE
COCOA, FLORIDA
P O BOX 778 (305) 632-6335

PREPARED FOR THE EXCLUSIVE USE OF THE CLIENT LISTED BELOW NOT VALID UNLESS EMBOSSED WITH SEAL

**BREVARD COUNTRY CLUB
DEVELOPMENT CORP.**

DEPREC

IMAGE

2711

71

0851

EXHIBIT C

LIST OF UNITS AND FRACTIONAL INTEREST IN COMMON ELEMENTS

Building 3: Unit Nos. 3-1, 3-2, 3-3, 3-4, 3-5, 3-6, 3-7, 3-8, 3-9,
3-10, 3-11, 3-12, 3-13, 3-14

Building 4

First Floor: Unit Nos. 4-1, 4-2, 4-3, 4-4, 4-5, 4-6

Second Floor: Unit Nos. 4-7, 4-8, 4-9, 4-10, 4-11, 4-12

Building 8

First Floor: Unit Nos. 8-1, 8-2, 8-3, 8-4, 8-5, 8-6, 8-7, 8-8

Second Floor: Unit Nos. 8-9, 8-10, 8-11, 8-12, 8-13, 8-14, 8-15, 8-16,
8-17, 8-18, 8-19, 8-20, 8-21, 8-22, 8-23, 8-24

NOTE: Each of the above units represents a one-fiftieth (1/50) undivided interest in the common elements and common surplus and shall pay one-fiftieth (1/50) each of the common expenses.

OFF REC'D

27 11

72

(PAGE)

0852