

AMENDMENT TO DECLARATION OF CONDOMINIUM
OF
CLUB HACIENDAS, A CONDOMINIUM

LA CITA DEVELOPMENT, INC., a Florida Corporation, pursuant to the authority reserved in Article XIII of the Declaration of Condominium establishing CLUB HACIENDAS, A CONDOMINIUM, as recorded in Official Records Book 2676, Page 2238, of the Public Records of Brevard County, Florida, and The Florida Condominium Act, hereby amends said Declaration above described as follows:

DELETE PAGES 7 THROUGH 10, INCLUSIVE, OF EXHIBIT "A"
THERETO AND SUBSTITUTE PAGES 7 THROUGH 10, INCLUSIVE,
ATTACHED HERETO AND INCORPORATED HEREIN BY REFERENCE

IN WITNESS WHEREOF, the above stated Developer has caused these presents to be signed and sealed on this 21 day of March, 1986.

SIGNED, SEALED AND DELIVERED

James W. Peoples III
Nancy C. Clark

LA CITA DEVELOPMENT, INC.

BY: *Robert T. Sisum* (SEAL)
ROBERT T. SISUM, President

STATE OF FLORIDA :
COUNTY OF BREVARD :

I HEREBY CERTIFY that on this 21 day of March, 1986, before me personally appeared ROBERT T. SISUM, President of LA CITA DEVELOPMENT, INC., a corporation under the laws of the State of Florida, to me known to be the person described in and who executed the foregoing and acknowledged the execution thereof to be his free act and deed as such officer, for the uses and purposes therein mentioned; and that he affixed thereto the official seal of said corporation, and the same instrument is the act and deed of said corporation.

WITNESS My signature and official seal at Titusville, in the State and County last aforesaid on the day and year last aforesaid.

Nancy C. Clark
NOTARY PUBLIC
My Commission Expires:

25.00

THIS INSTRUMENT PREPARED BY:
JAMES W. PEEPLES III, ESQ.
Wolfe, Kirschenbaum & Mosley, P.A.
P.O. Box #757
Cocoa Beach, Florida 32931

OFF: REC:
2682

PAGE:
2504

160588

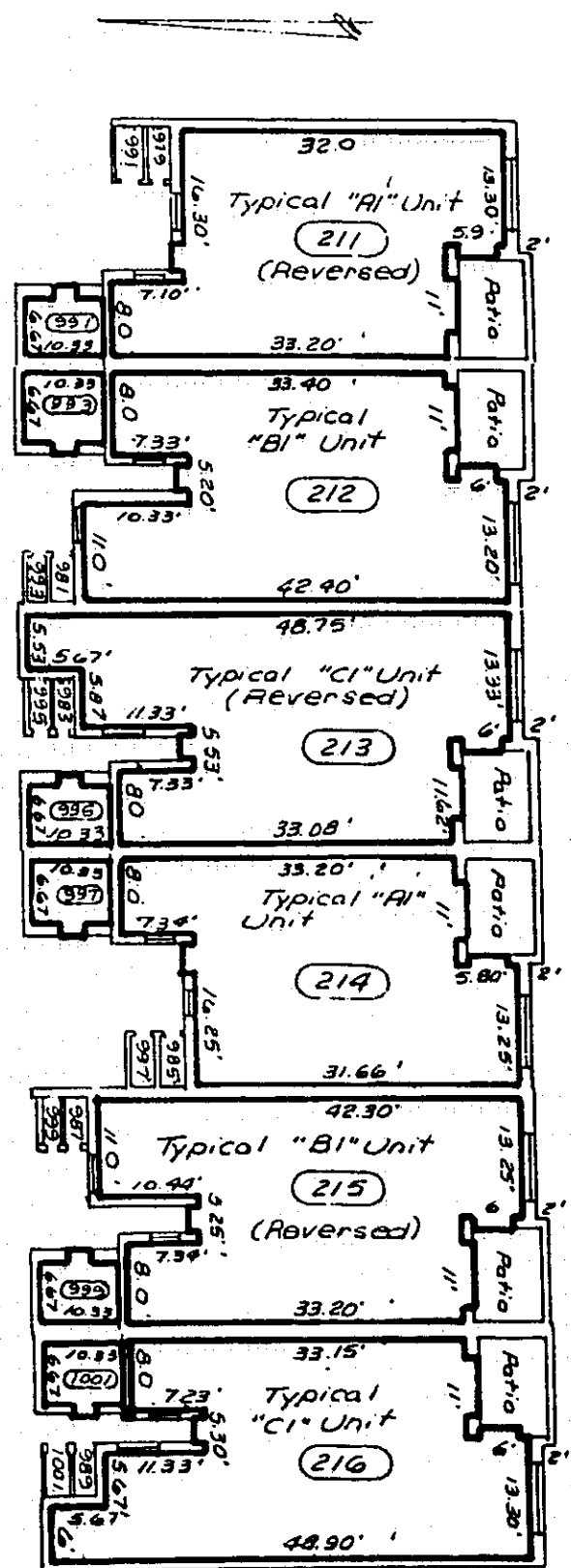
1986 MAR 24 PM 4: 11

CLUB HACIENDAS, A CONDOMINIUM

FIRST FLOOR, BUILDING # 2

SURVEYOR'S NOTES

1. THE FIRST FLOOR FINISHED FLOOR ELEVATION IS 20.19 FEET.
2. ——— INDICATES THE HORIZONTAL LIMITS OF THE UNITS.
3. REFER TO SHEETS 23, 24 AND 25 FOR VERTICAL LIMITS OF THE UNITS.
4. (211) INDICATES THE UNIT NUMBER DESIGNATION.
5. ALL AREAS AND IMPROVEMENTS EXCLUSIVE OF THE UNITS ARE COMMON ELEMENTS OF THE CONDOMINIUM.
6. THE ELEVATIONS SHOWN ARE BASED ON N.G.V. DATUM OF 1929.
7. SEE SHEETS 17 THROUGH 22 FOR TYPICAL UNIT PLANS.
8. THE STORAGE AREAS SHOWN ARE 3.33' X 5.16' IN SIZE AND ARE COMMON ELEMENTS LIMITED TO THE USE OF CERTAIN UNITS AS SET FORTH IN THE DECLARATION.
9. THE PATIOS SHOWN ARE COMMON ELEMENTS LIMITED TO THE USE OF THE ADJACENT UNIT.



2682
OFF REC'D

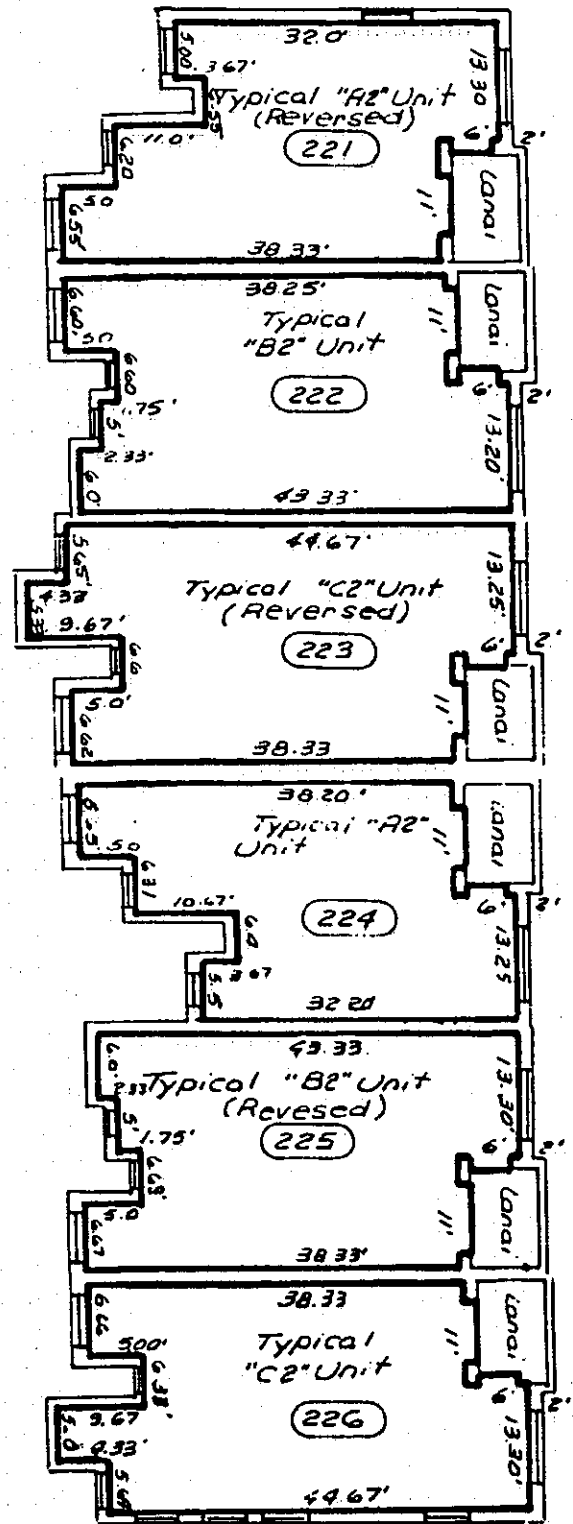
2505
PAGE

CLUB HACIENDAS, A CONDOMINIUM

SECOND FLOOR PLAN, BUILDING # 2

SURVEYOR'S NOTES

1. THE SECOND FLOOR FINISHED FLOOR ELEVATION IS 29.65 FEET.
2. ——— INDICATES THE HORIZONTAL LIMITS OF THE UNITS.
3. REFER TO SHEETS 23, 24, AND 25 FOR VERTICAL LIMITS OF THE UNITS.
4. (221) INDICATES THE UNIT NUMBER DESIGNATION.
5. ALL AREAS AND IMPROVEMENTS EXCLUSIVE OF THE UNITS ARE COMMON ELEMENTS OF THE CONDOMINIUM.
6. THE ELEVATIONS SHOWN ARE BASED N.G.V. DATUM OF 1929.
7. SEE SHEETS 17 THROUGH 22 FOR TYPICAL UNIT PLANS.
8. THE ENTRANCE TO THE SECOND FLOOR UNITS IS LOCATED ON THE FIRST FLOOR PLAN, REFER TO SHEET 7
9. THE LANAI SHOWN ARE COMMON ELEMENTS LIMITED TO THE USE OF THE ADJACENT UNIT.



2682

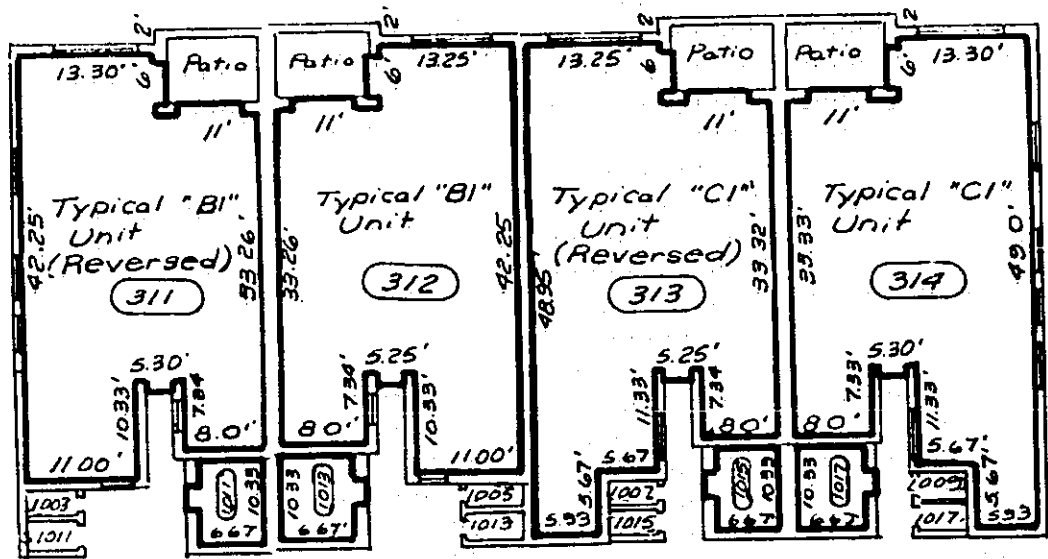
OFF. REC.:

2506

PAGE:

CLUB HACIENDAS, A CONDOMINIUM

FIRST FLOOR PLAN, BUILDING # 3



SURVEYOR'S NOTES

1. THE FIRST FLOOR FINISHED FLOOR ELEVATION IS 20.79 FEET.
2. ——— INDICATES THE HORIZONTAL LIMITS OF THE UNITS.
3. REFER TO SHEETS 24 AND 25 FOR VERTICAL LIMITS OF THE UNITS.
4. (311) INDICATES THE UNIT NUMBER DESIGNATION.
5. ALL AREAS AND IMPROVEMENTS EXCLUSIVE OF THE UNITS ARE COMMON ELEMENTS OF THE CONDOMINIUM.
6. THE ELEVATIONS SHOWN ARE BASED ON N.G.V. DATUM OF 1929.
7. SEE SHEETS 19 THROUGH 22 FOR TYPICAL UNIT PLANS.
8. THE STORAGE AREAS SHOWN ARE 3.33' X 5.16' IN SIZE AND ARE COMMON ELEMENTS LIMITED TO THE USE OF CERTAIN UNITS AS SET FORTH IN THE DECLARATION.
9. THE PATIOS SHOWN ARE COMMON ELEMENTS LIMITED TO THE USE OF THE ADJACENT UNIT.

2682

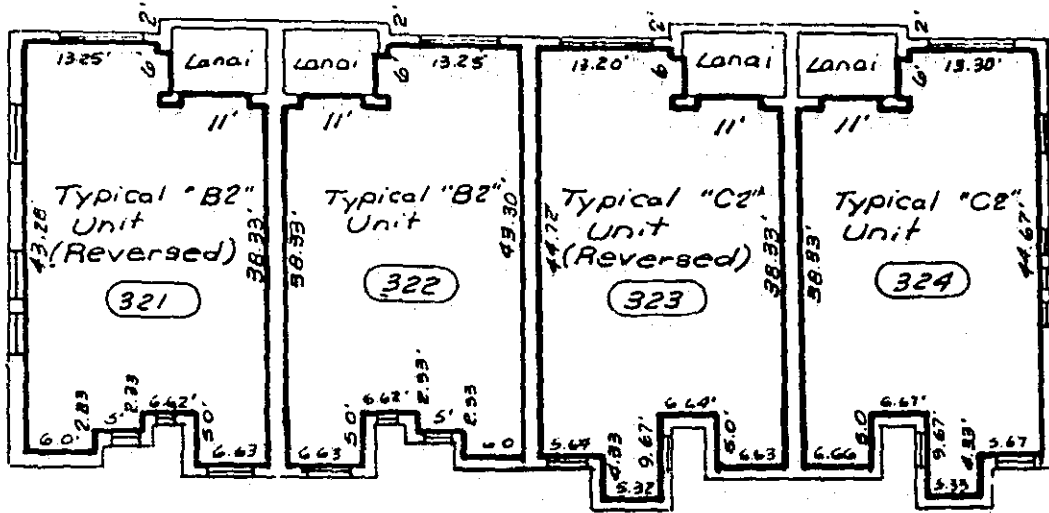
OFF. REC'D

2507

PAGE

CLUB HACIENDA, A CONDOMINIUM

SECOND FLOOR PLAN, BUILDING # 3



SURVEYOR'S NOTES

1. THE SECOND FLOOR FINISHED FLOOR ELEVATION IS 30.25 FEET.
2. ——— INDICATES THE HORIZONTAL LIMITS OF THE UNITS.
3. REFER TO SHEETS 24 AND 25 FOR VERTICAL LIMITS OF THE UNITS
4. (321) INDICATES THE UNIT NUMBER DESIGNATION.
5. ALL AREAS AND IMPROVEMENTS EXCLUSIVE OF THE UNITS ARE COMMON ELEMENTS OF THE CONDOMINIUM.
6. THE ELEVATIONS SHOWN ARE BASED ON N.C.V. DATUM OF 1929.
7. SEE SHEETS 19 THROUGH 22 FOR TYPICAL UNIT PLANS.
8. THE ENTRANCE TO THE SECOND FLOOR UNITS IS LOCATED ON THE FIRST FLOOR PLAN, REFER TO SHEET 9
9. THE LANAI SHOWN ARE COMMON ELEMENTS LIMITED TO THE USE OF THE ADJACENT UNIT.

2082
OFF. REC:

2508
PAGE:

CERTIFICATE

The undersigned, as Secretary of CLUB HACIENDAS CONDOMINIUM ASSOCIATION, INC., hereby certifies that at a joint meeting of the membership and the Board of Administration of CLUB HACIENDAS, A CONDOMINIUM, as established by the recording of the Declaration of Condominium in Official Records Book 2676, Page 2238, of the Public Records of Brevard County, Florida, the attached Amendment to Declaration of Condominium of Club Haciendas, A Condominium, was adopted by the required vote of the membership as set forth in the Declaration of Condominium

IN WITNESS WHEREOF, I have hereunto set my hand this 21 day of March, 1986.

Diane Bennett
SECRETARY

STATE OF FLORIDA)
COUNTY OF BREVARD)

BEFORE ME, the undersigned authority, personally appeared DIANE BENNETT, known to me to be the Secretary of CLUB HACIENDAS CONDOMINIUM ASSOCIATION, INC., and she acknowledged before me that she executed the foregoing certificate as such officer of said corporation freely and voluntarily for the purposes set forth therein.

WITNESS my hand and official seal, this 21st day of March, 1986.

Nancy L. Clark
Notary Public - State of Florida

My Commission Expires:

EXPIRES: 12/31/88
1988

OFF. REC.
2682

IMAGE
2509